

Quinta da Bouça D'Arques







UNESCO WORLD  
HERITAGE



NATURAL PARK AND  
PROTECTED LANDSCAPE



NATIONAL PARK



HIGHWAYS



AIRPORT



PORTUGUESE WAY  
OF SANTIAGO

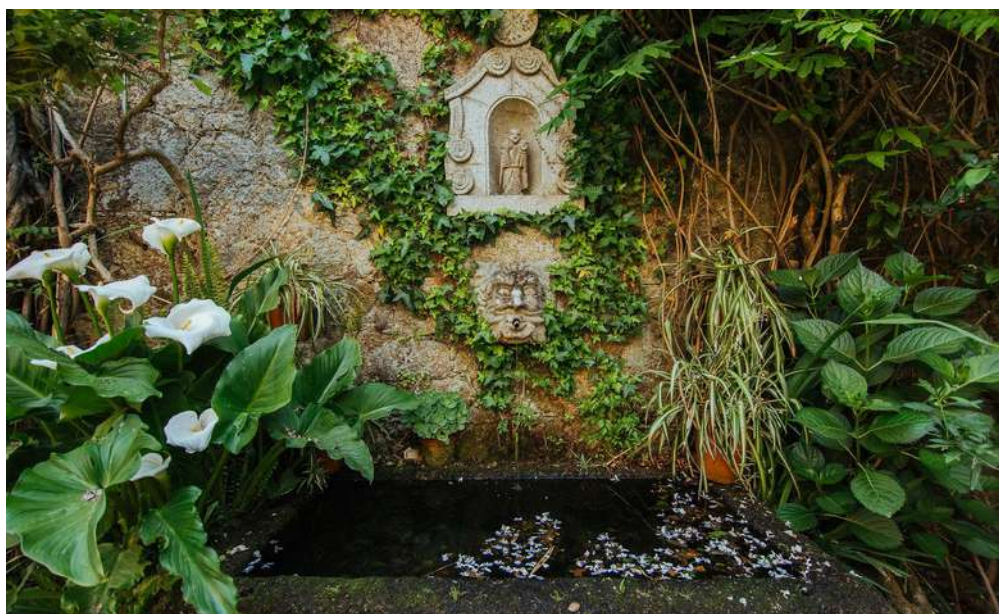


QUINTA DA BOUÇA  
D'ARQUES

Surrounded by lush greenery and profound serenity, Quinta da Bouça d'Arques brings together all the characteristics of the deepest Minho traditions: Splendid trellised vineyards, courtyards sheltered by hundred-year-old trees and a sunny, superbly restored house which has stood under the Abreu Teixeira coat of arms for more than 300 years.

Quinta da Bouça D'Arques is situated in the Rio Neiva valley. It has vineyards to the south, woodland to the north and a XVIII century manor house that opened as a guesthouse in 1997, following the renovation of its old agricultural features. It has belonged to the family for more than three centuries.

Here you'll find the traditional, classic décor of Minho manor houses alongside the rustic-chic and contemporary, as well as architectural design that has been evolving since 1996.



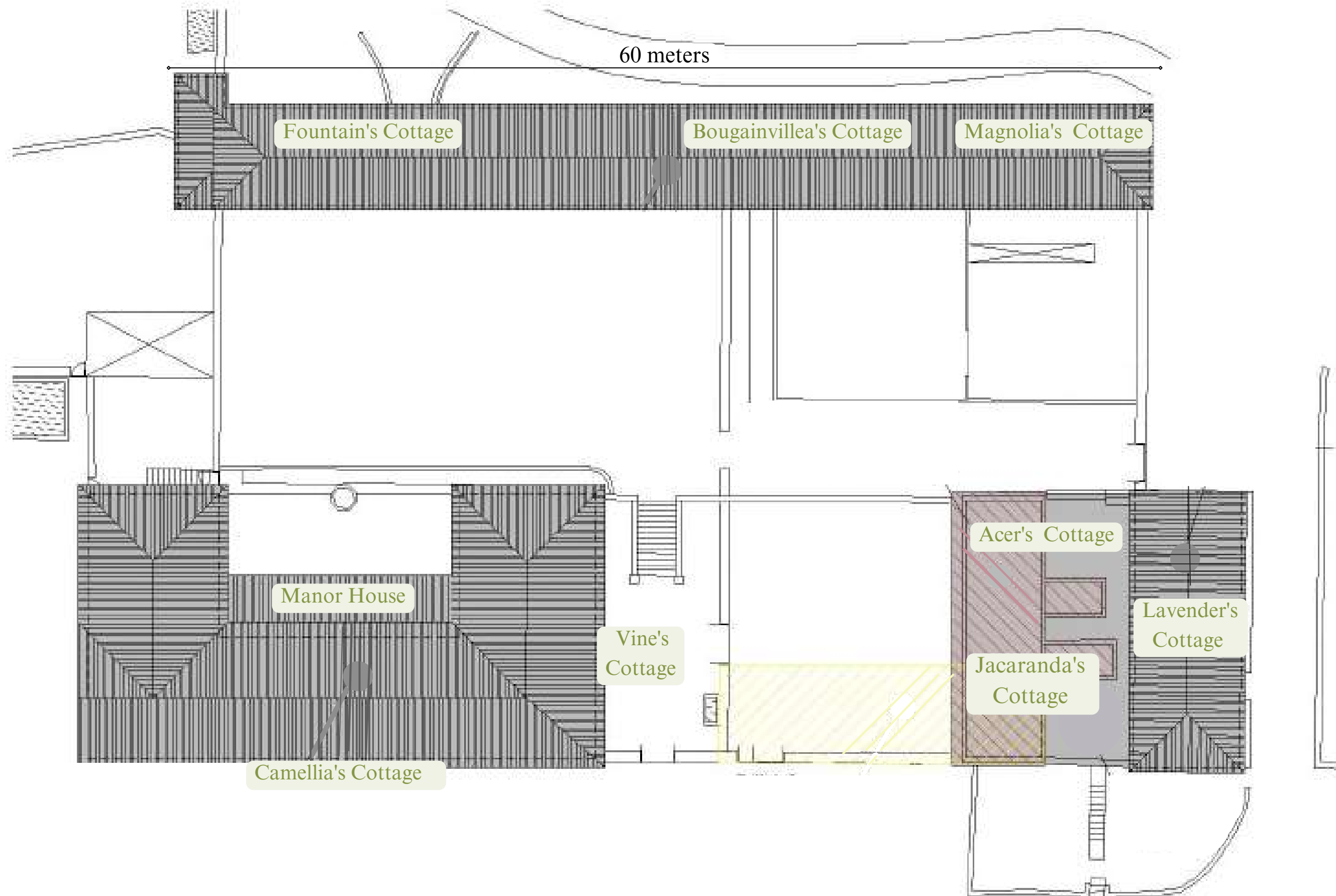
## Overview

**8 Cottages:** 7 with one bedroom & 1 with two bedrooms.

**Manor House:** with two suites and one bedroom with a double bed, living room, dining room, kitchen, interior veranda, exterior veranda, and an exclusive outdoor area.

### **Saltwater Pool, Woods, Vineyards & Gardens**

Where you can enjoy the wonderful atmosphere and evidence of the quiet heritage of ancient farm buildings founding the perfect balance between contemporary style, comfort and tradition.





1. Fountain's Cottage
2. Bougainvillea's Cottage
3. Magnolia's Cottage
4. Lavender's Cottage
5. Acer's Cottage
6. Jacaranda's Cottage
7. Camellia's Cottage
8. Vine's Cottage
9. Manor House



Fountain's Cottage

## Fountain's Cottage

It's a T1 with 60 sq. m. located right in front of the manor house, offering views of the main garden, and it has a private balcony where you can see one of our orangery and an exclusive porch where you can find a fountain. The cottage includes a bedroom with a double bed, a private bathroom with a bathtub, an equipped kitchenette, and a living room with 2 sofa beds.





Bougainvillea's Cottage

## Bougainvillea's Cottage

It's a T1 with 50 sq. m. located next to our traditional granary with an exclusive outside area. The cottage includes a bedroom with a double bed, a private bathroom with a bathtub, equipped kitchenette, living room with 2 sofa beds. It also has a huge traditional living room with a dining table, sofas, and an open fireplace.





Magnolia's Cottage

# Magnolia's Cottage

It's a T1 with 50 sq. m. located right in front of our traditional granary with an exclusive outside area. The cottage includes a bedroom with a double bed, a private bathroom with a shower cabin, an equipped kitchenette, and a living room with 2 sofa beds.





Lavender's Cottage

## Lavender's Cottage

It's a T2 with 90 sq. m. with an exclusive outside area. The cottage includes two bedrooms with a double bed, a bedroom with two single beds, a private bathroom with a shower cabin and equipped kitchenette.





Acer's Cottage

## Acer's Cottage

It's a T1 with 47 sq. m., one of our most recent cottages, where you can count on an exclusive outside area.

The cottage includes a bedroom with a double bed, a private bathroom with a shower cabin, a living room, and an equipped kitchenette.





Jacaranda's Cottage

## Jacaranda's Cottage

It's a T1 with 48 sq. m., one of our most modern cottages, with an exclusive outside area and a great view of our vineyards.

The cottage includes a bedroom with a double bed, a private bathroom with a shower cabin, a living room, and an equipped kitchenette.





Camellia's Cottage

## Camellia's Cottage

It's a T1 with 60 sq. m., located on the ground floor of the manor house with an exclusive outside area. The cottage includes a bedroom with a double bed, a private bathroom with a shower cabin, a living room, and an equipped kitchenette.





Vine's Cottage

## Vine's Cottage

It's a T1 with 60 sq. m., located on the ground floor of the manor house with an exclusive outside area and a porch with 25 sq. m.. It's the only master suite at the property and it includes a bedroom with a double bed, private bathroom with bathtub and a living room.





Manor House

# Manor House

It has 220 sq. m., with two suites and one bedroom with a double bed, living room, dining room, kitchen, interior veranda, exterior veranda, and an exclusive outdoor area. It's available for adults only with a minimum stay of 7 nights.





## Guest Room Amenities

- Free high-speed Wi-Fi
- Smart TV + DVD player
- Hair dryer
- Towel heater in all bathrooms
- Pod coffee machine
- Aroma de Portugal amenities
- Air conditioner
- 100% cotton bed linen
- Down and feather pillows and duvets
- 100% wool blankets for outdoor comfort
- Outdoor patios equipped with garden furniture

## Hotel Services

- Reception open from 8am. to 4pm.

24H available on the phone +351 967 571 524 or + 351 968 044 992

- Laundry and dry cleaning service outsource
- Free bicycles for cycling
- Full access to all gardens and vineyards
- Massages
- Outdoor swimming pool
- Farm breakfast with local artisanal bread and selected foods
- Farm shop with products from the area
- Horse riding
- Indoor and outdoor activities

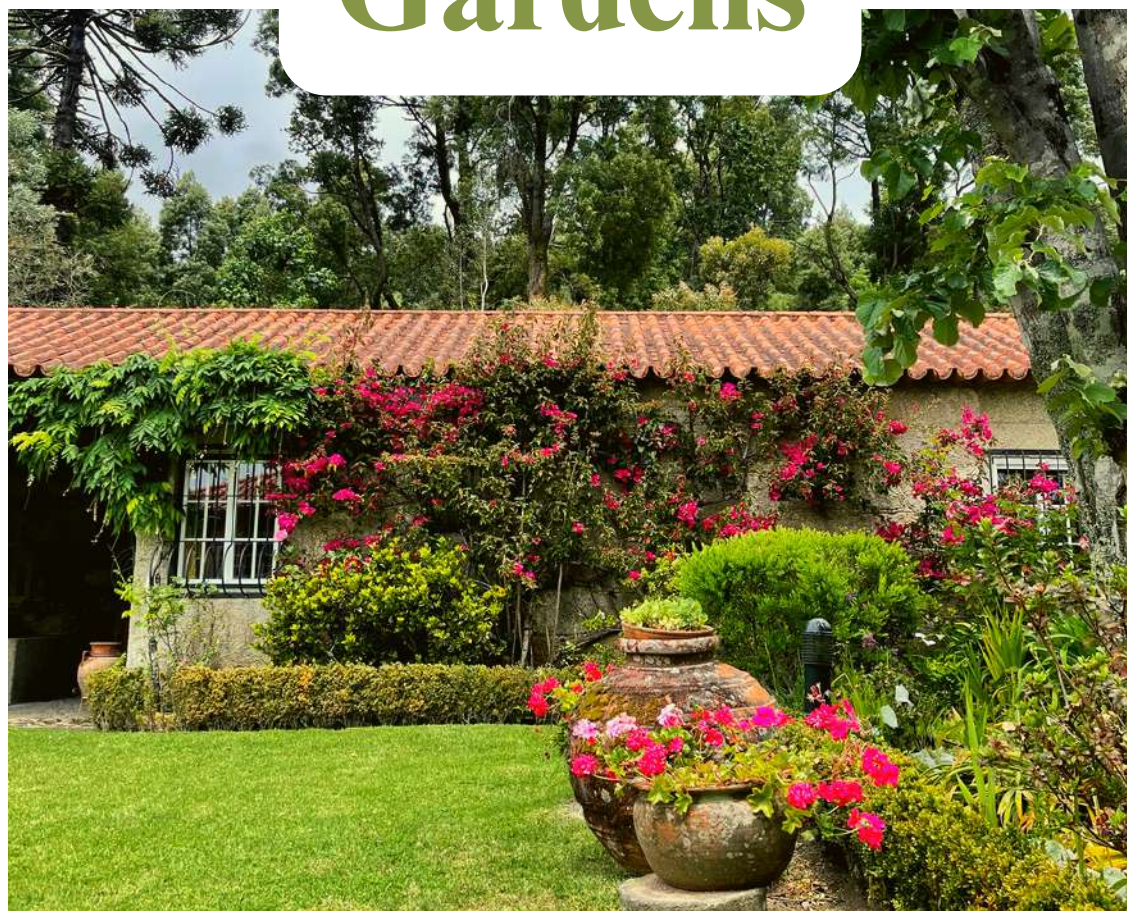
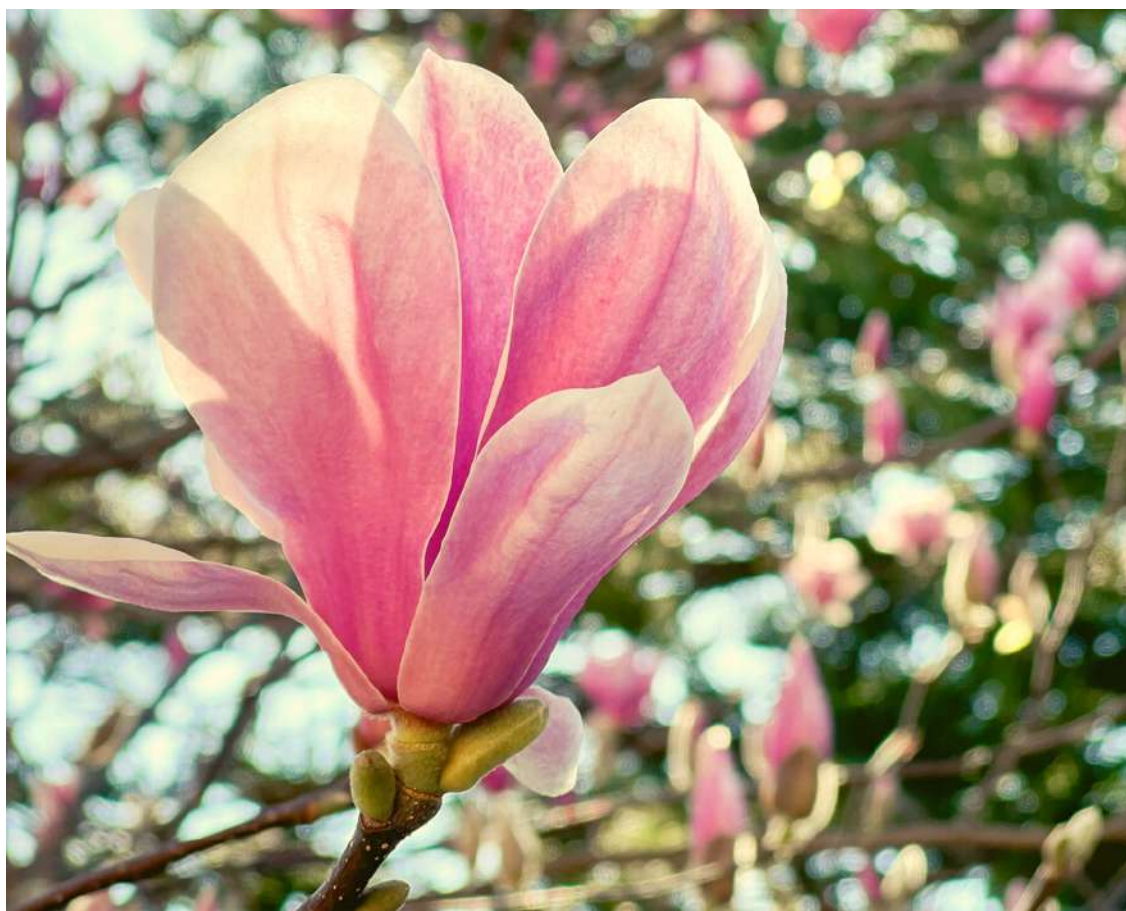


Pool





# Gardens



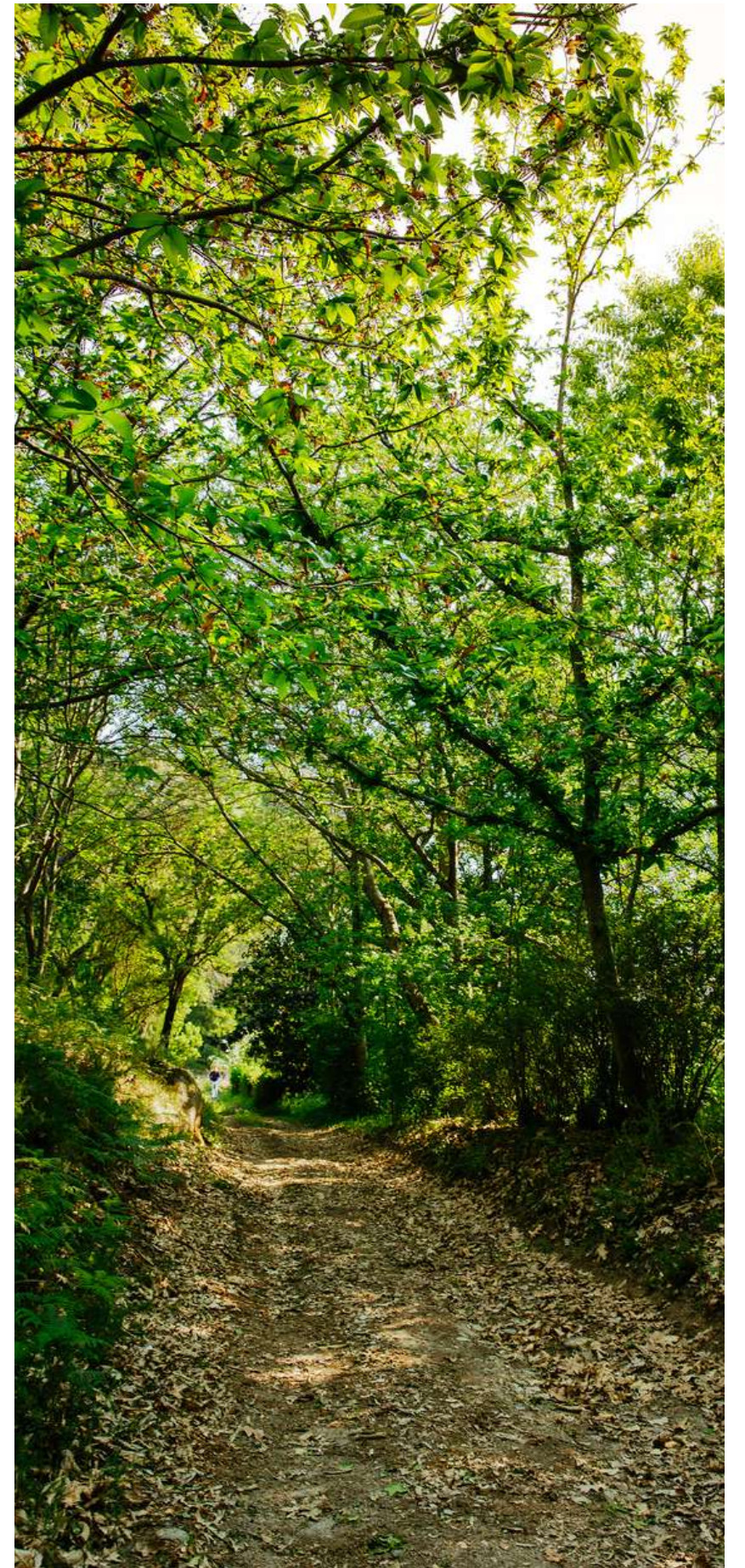


# Vineyards



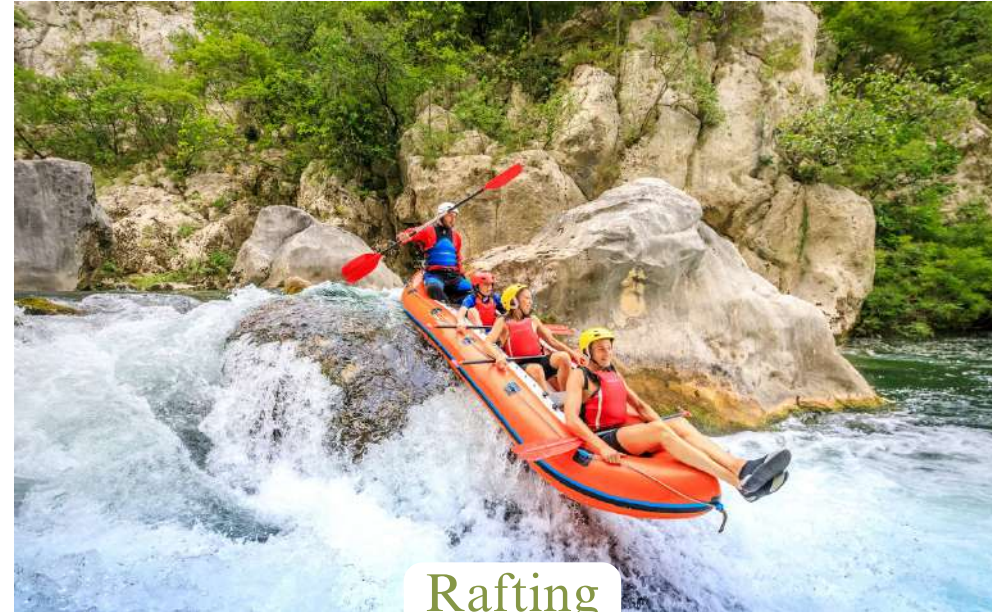


# Woods



# ACTIVITIES

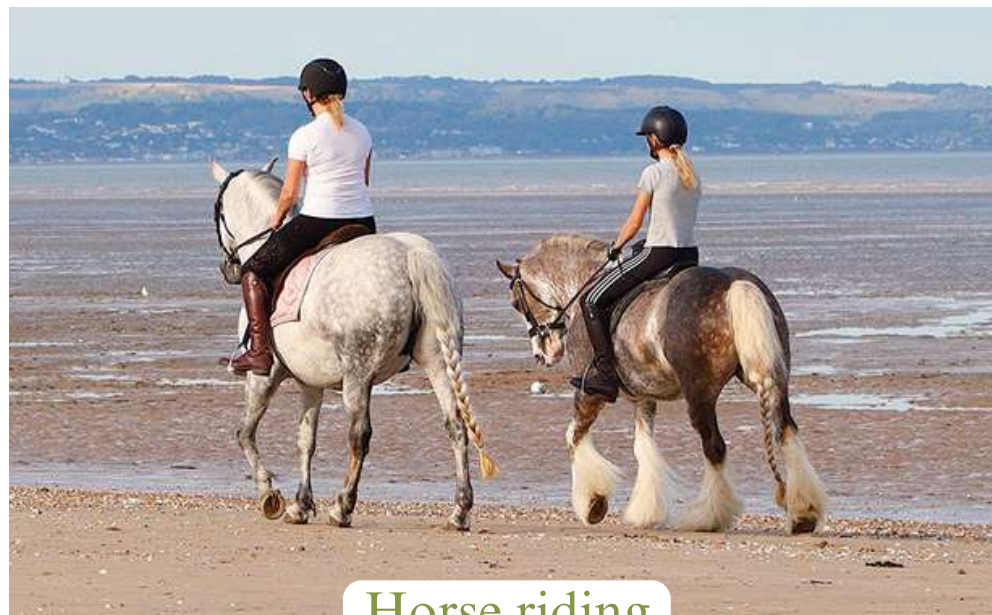
We are happy to help you to plan your activities.



Rafting



Cycling



Horse riding



Walking tours



Surf lessons



Wine tasting



Massages

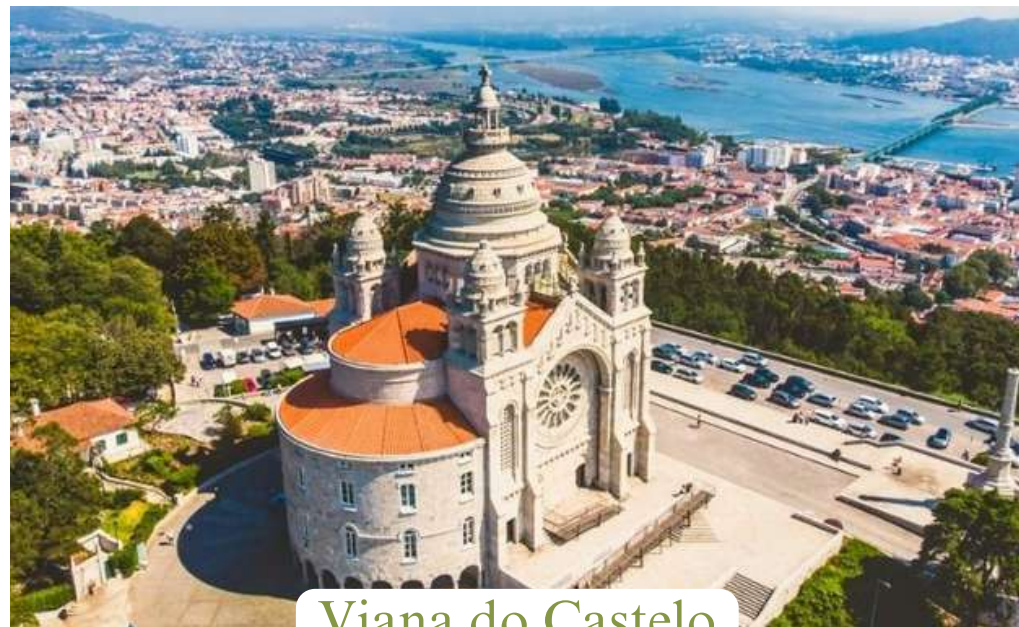


Show cooking & lessons

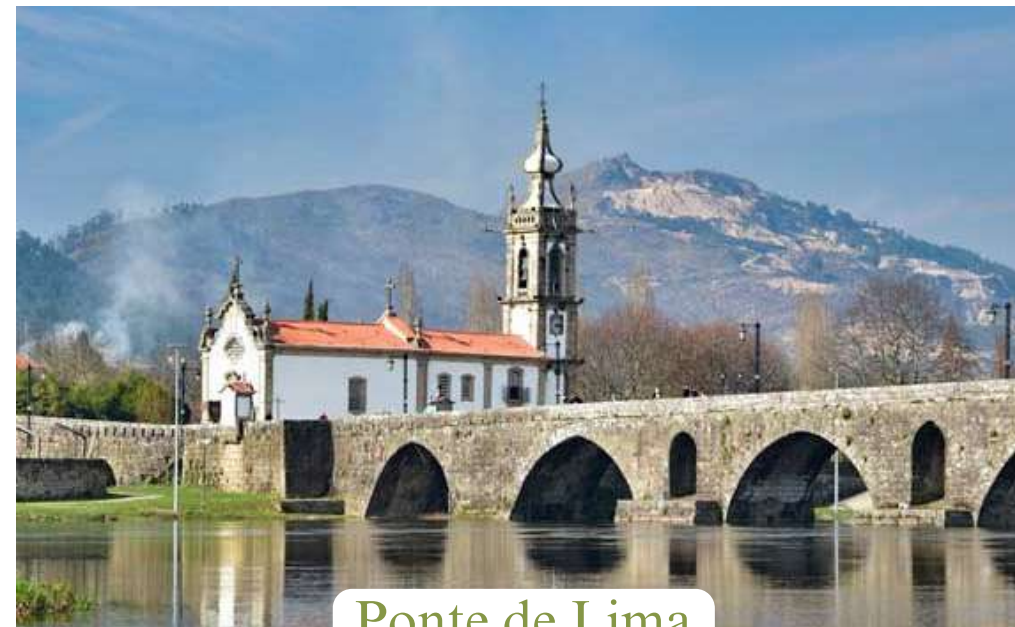


# BEACHES & WATERFALLS





Viana do Castelo



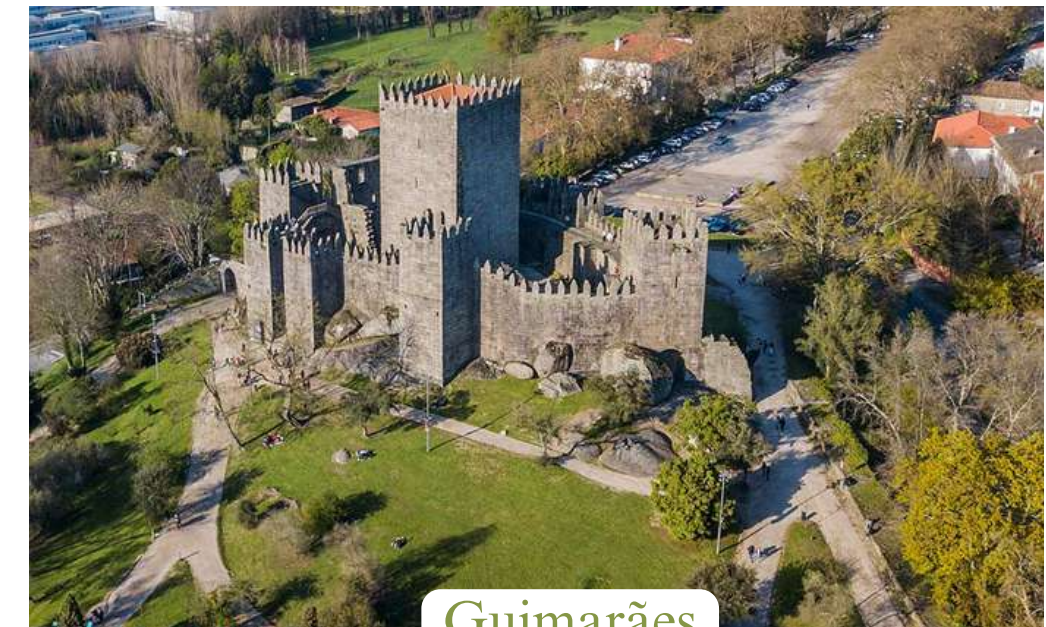
Ponte de Lima



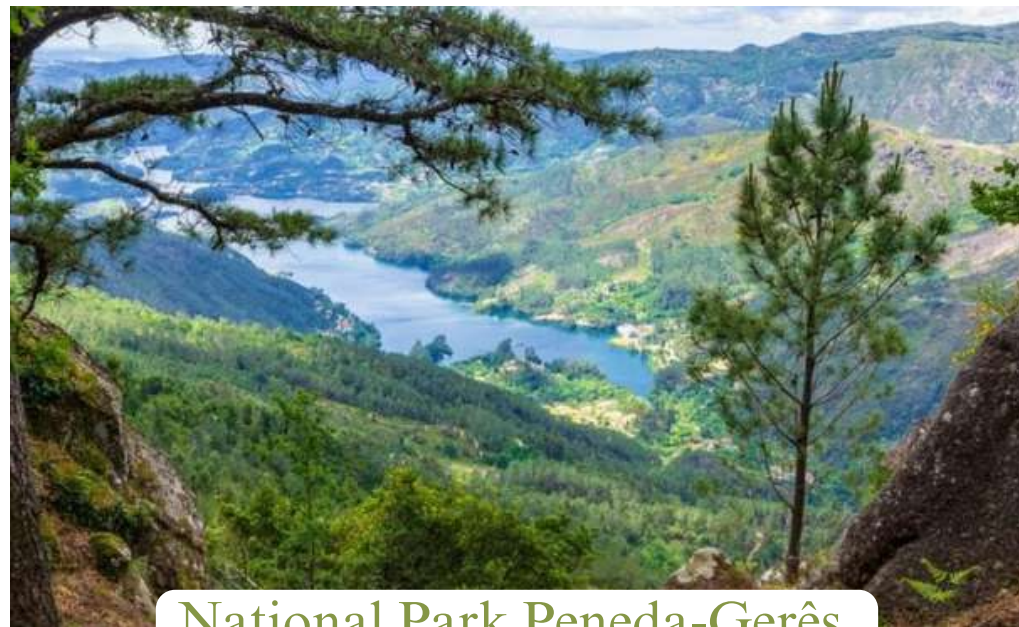
Barcelos



Braga



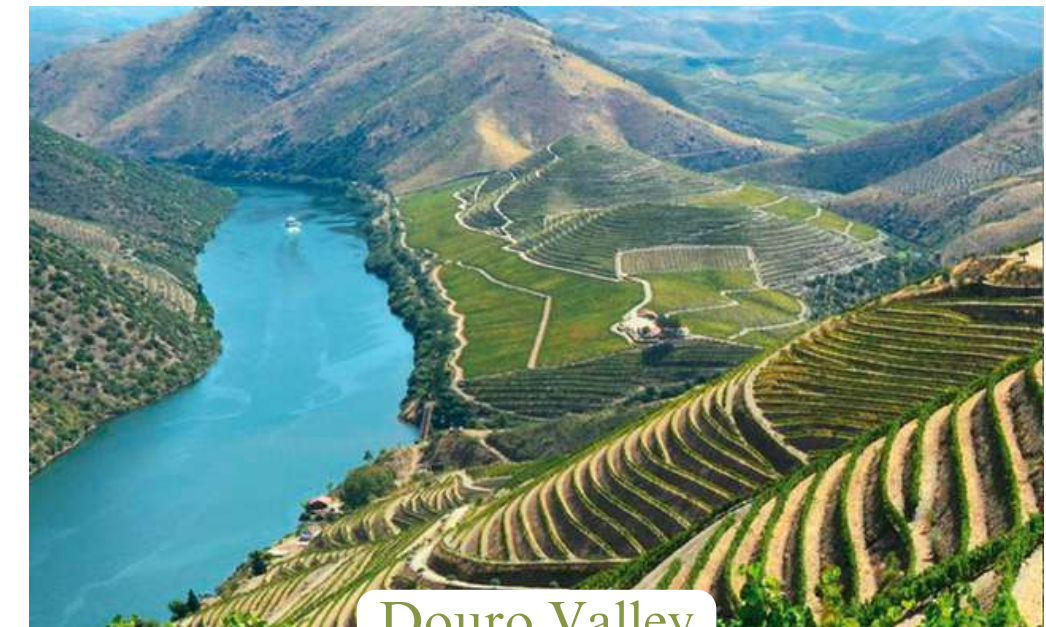
Guimarães



National Park Peneda-Gerês.



Porto



Douro Valley



Quinta da Bouça D'Arques | Rua Abreu Teixeira, 333 - 4905-641 Vila de Punhe | Viana do Castelo

T 00351 968 044 992 E [joaomcoutho@net.sapo.pt](mailto:joaomcoutho@net.sapo.pt)

[www.boucadarques.com](http://www.boucadarques.com)